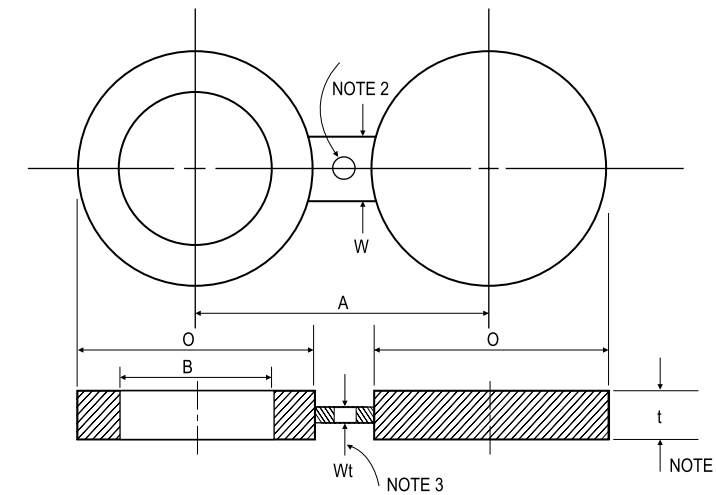


API 590 FIG.8

- CLASS 150LB, 300LB RAISED FACE
- CLASS 600LB, 900LB RAISED FACE
- CLASS 1500LB, 2500LB RAISED FACE

API 590 FIG.8

CLASS 150LB, 300LB RAISED FACE

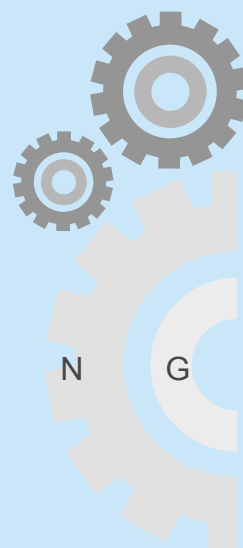


Unit:mm

Size	150LB					300LB				
	B	O	A	t	W	B	O	A	t	W
1/2	16	44	60	3	38	16	51	67	6	38
3/4	21	54	70	3	38	21	64	83	6	38
1	27	64	79	3	38	27	70	89	6	38
1 1/4	42	73	89	6	38	42	79	99	6	38
1 1/2	48	83	99	6	38	48	92	114	6	51
2	60	102	121	6	51	60	108	127	10	51
2 1/2	73	121	140	6	51	73	127	149	10	64
3	89	133	152	6	64	89	146	168	10	64
3 1/2	102	159	178	10	64	102	162	184	13	64
4	114	171	190	10	64	114	178	200	13	64
5	141	194	216	10	76	141	213	235	16	76
6	168	219	241	13	76	168	248	270	16	76
8	219	276	298	13	76	219	305	330	22	89
10	273	337	362	16	102	273	359	387	25	102
12	324	406	432	19	102	324	419	451	28	102
14	356	448	476	19	108	356	483	514	32	121
16	406	511	540	22	108	406	537	572	38	124
18	457	546	578	25	114	457	594	629	41	114
20	508	603	635	28	121	508	651	686	44	121
24	610	714	749	32	140	610	772	813	51	140

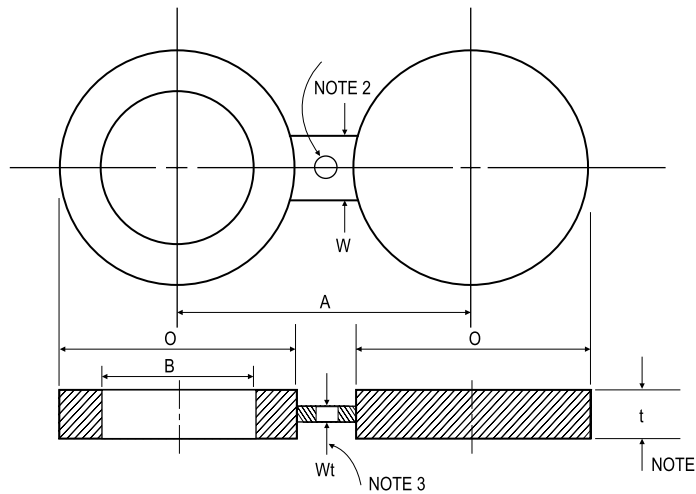
Notes:

1. Thickness(dimension *t*) includes a corrosion allowance of 0.05 inch (1.3millimeters)for material groups 1.1, 1.7, 1.9, 1.10, and 1.12. Corrosion allowance is 0.00 inch for material groups 2.1, 2.2, 2.4, and 2.5.
2. Hole size (where required due to bolt spacing)shall be the same as the flange bolt hole.
3. The thickness of the web (or tie bar)dimension *Wt*, shall be 0.25 inch (6.35 millimeter) minimum, except when *t* is less than 0.25 inch, *Wt* shall equal *t*.



API 590 FIG.8

CLASS 600LB, 900LB RAISED FACE



Unit:mm

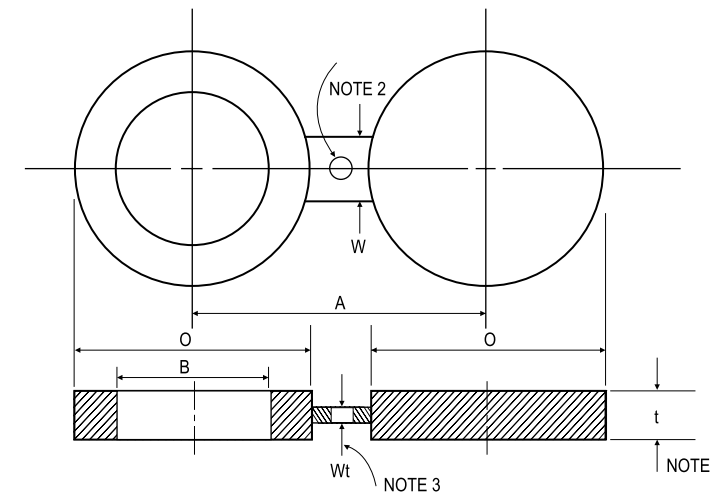
Size	600LB					900LB				
	B	O	A	t	W	B	O	A	t	W
1/2	16	51	67	6	38	16	60	83	6	38
3/4	21	64	83	6	38	21	67	89	6	41
1	27	70	89	6	57	27	76	102	6	57
1 1/4	37	79	99	10	57	37	86	111	10	57
1 1/2	43	92	114	10	67	43	95	124	10	67
2	55	108	127	10	57	55	140	165	13	57
2 1/2	67	127	149	13	67	67	162	190	13	67
3	83	146	168	13	67	83	165	190	16	67
3 1/2	96	159	184	16	76	-	-	-	-	-
4	108	191	216	16	76	108	203	235	19	76
5	135	238	267	19	86	135	244	279	22	86
6	162	264	292	22	86	162	286	318	25	86
8	212	318	349	28	95	212	356	394	35	95
10	265	397	432	35	105	265	432	470	41	105
12	315	454	489	41	105	315	495	533	48	105
14	346	489	527	44	114	346	518	559	54	114
16	398	562	603	51	124	397	572	616	60	124
18	448	610	654	54	133	448	635	686	67	133
20	497	679	724	64	133	497	695	749	73	133
24	597	787	838	73	152	597	835	902	89	152

Notes:

1. Thickness(dimension *t*) includes a corrosion allowance of 0.05 inch (1.3millimeters)for material groups 1.1, 1.7, 1.9, 1.10, and 1.12. Corrosion allowance is 0.00 inch for material groups 2.1, 2.2, 2.4, and 2.5.
2. Hole size (where required due to bolt spacing)shall be the same as the flange bolt hole.
3. The thickness of the web (or tie bar)dimension *W_t*, shall be 0.25 inch (6.35 millimeter) minimum, except when *t* is less than 0.25 inch, *W_t* shall equal *t*.

API 590 FIG.8

CLASS 1500LB, 2500LB RAISED FACE



Unit:mm

Size	1500LB					2500LB				
	B	O	A	t	W	B	O	A	t	W
1/2	16	60	83	6	38	16	67	89	10	38
3/4	21	67	89	10	41	21	73	95	10	41
1	27	76	102	10	64	27	83	108	10	64
1 1/4	35	86	111	10	64	35	102	130	13	64
1 1/2	41	95	124	13	70	41	114	146	16	70
2	53	140	165	13	70	53	143	171	16	70
2 1/2	63	162	190	16	76	63	165	197	19	76
3	78	171	203	19	76	78	194	229	22	76
3 1/2	-	-	-	-	-	-	-	-	-	-
4	102	206	241	22	89	102	232	273	28	89
5	128	251	292	28	89	128	276	324	35	89
6	154	279	318	35	89	154	314	368	41	89
8	203	349	394	41	102	198	384	438	54	102
10	255	432	483	51	114	248	473	540	67	114
12	303	518	572	60	114	289	546	619	79	114
14	333	575	635	67	127	-	-	-	-	-
16	381	638	705	76	133	-	-	-	-	-
18	429	702	775	86	146	-	-	-	-	-
20	478	752	832	95	152	-	-	-	-	-
24	575	899	991	111	178	-	-	-	-	-

Notes:

1. Thickness(dimension *t*) includes a corrosion allowance of 0.05 inch (1.3millimeters)for material groups 1.1, 1.7, 1.9, 1.10, and 1.12. Corrosion allowance is 0.00 inch for material groups 2.1, 2.2, 2.4, and 2.5.
2. Hole size (where required due to bolt spacing)shall be the same as the flange bolt hole.
3. The thickness of the web (or tie bar)dimension *W_t*, shall be 0.25 inch (6.35 millimeter) minimum, except when *t* is less than 0.25 inch, *W_t* shall equal *t*.