

# SPACER AND BLANK

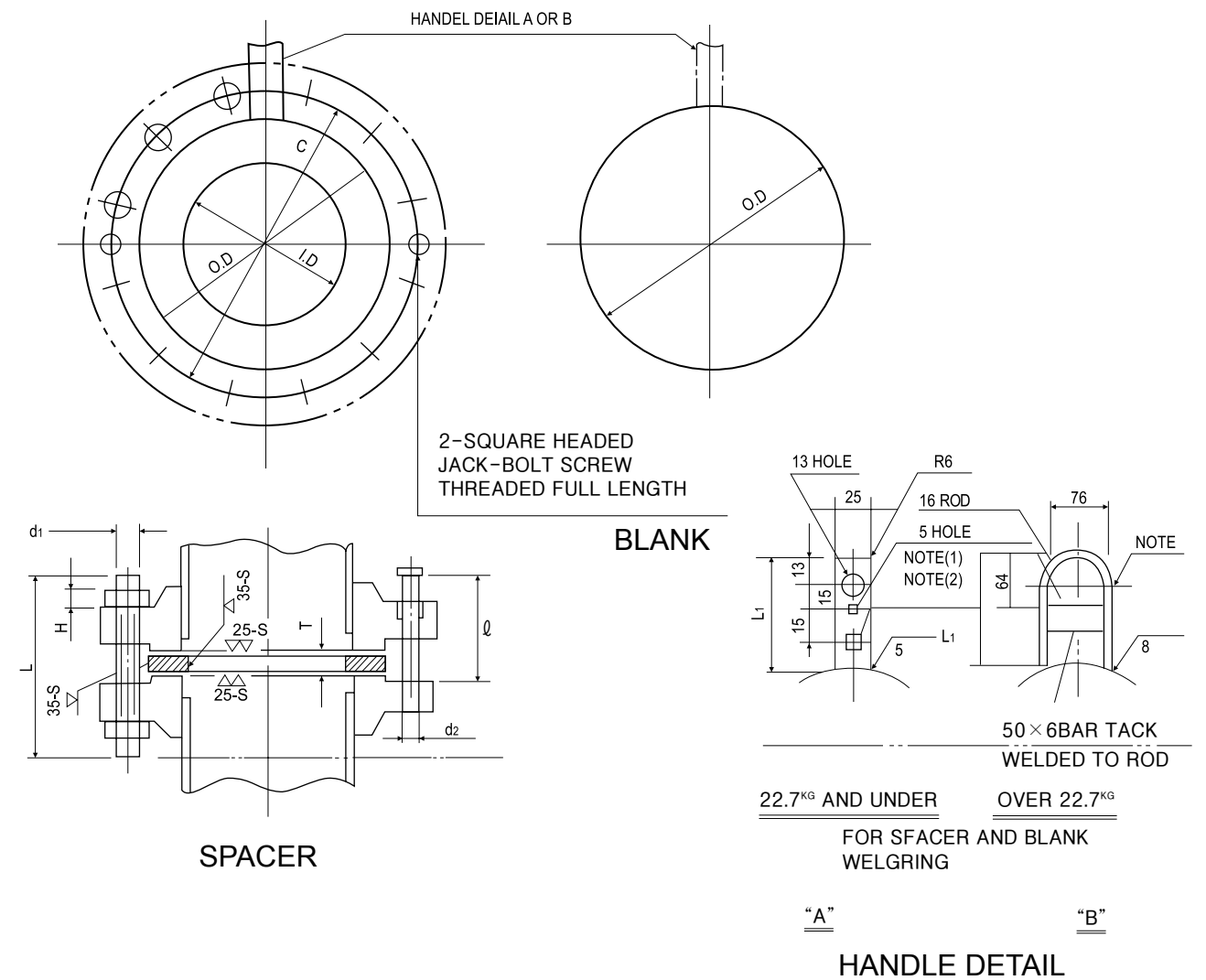
- 150LB SPACER AND BLANK
- 300LB SPACER AND BLANK



F L A N G E S



## 150LB SPACER AND BLANK

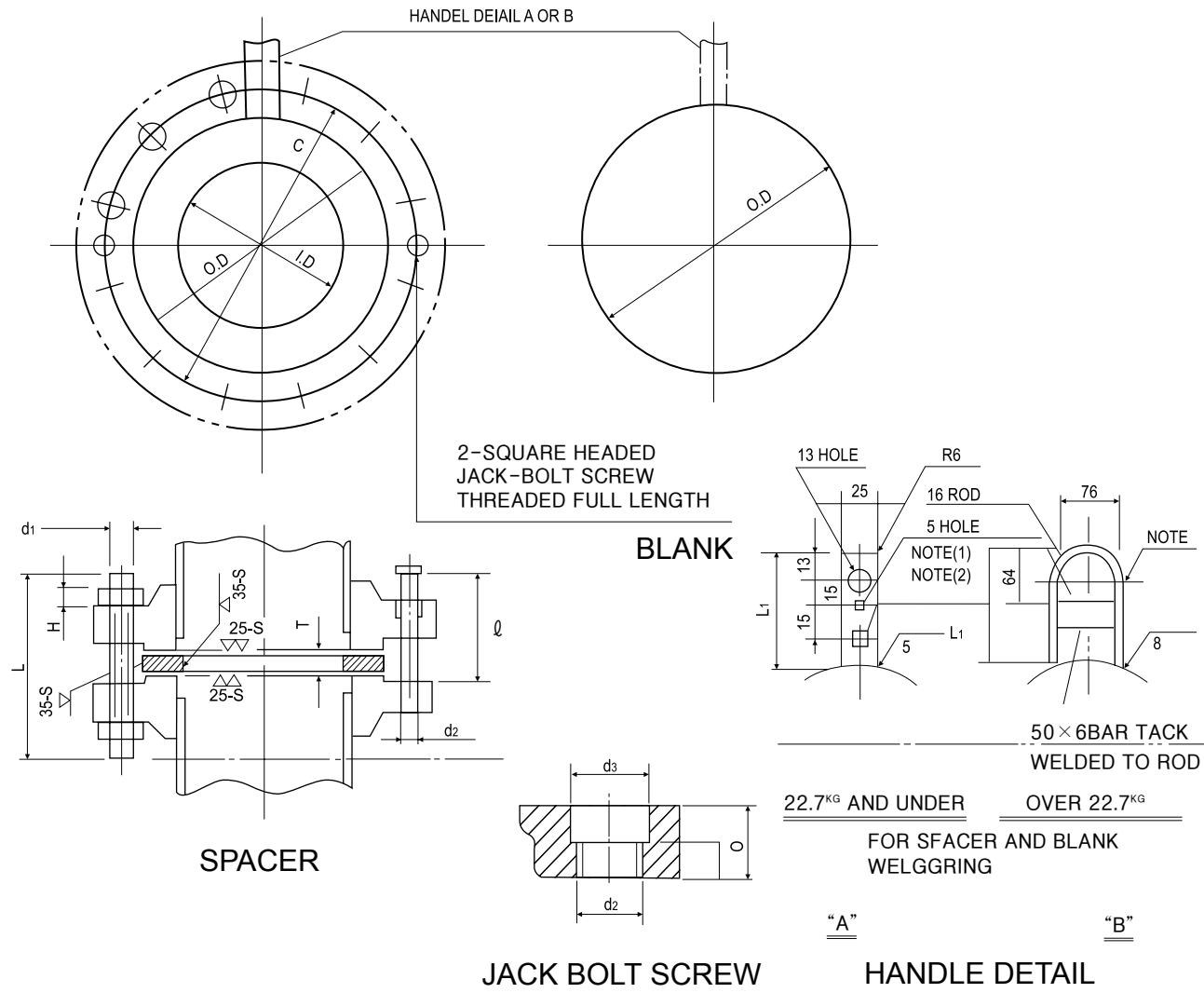


Unit:mm

SIZE (B)	SPACER & BLANK				BOLT&NUT					JACK SCREW		WEIGHT(KG)		REMARKS
	O.D	I.D	T	L1	C	d1	NO	L	H	d2	ℓ	SPACER	BLANK	
8	276	219	13	165	298.4	M20	8	140	20	M20	75	3.6	7.8	-
10	337	273	16	165	361.9	M22	12	150	22	M20	80	5.8	13.5	-
12	406	324	19	165	431.8	M22	12	155	22	M20	85	9.9	22.7	-
14	448	359	19	172	476.2	M27	12	175	27	M20	90	12.4	30.6	-
16	511	406	22	172	539.7	M27	16	180	27	M22	90	17.0	42.8	-
18	546	457	25	172	577.8	M30	16	195	30	M22	100	17.9	54.2	-
20	603	508	28	178	635.0	M30	20	210	30	M22	105	24.2	73.0	-
24	714	610	32	178	749.3	M33	20	230	33	M24	115	36.7	121.0	-

Notes:  
 (1) 5ø Hole shall only be applied to the spacer.  
 (2) To be die stamp on both side as follows, spacer is "S" and blank is "B"  
 (3) For dimensional tolerances

# 300LB SPACER AND BLANK



50 × 6BAR TACK  
WELDED TO ROD

22.7<sup>KG</sup> AND UNDER      OVER 22.7<sup>KG</sup>

FOR SFACER AND BLANK  
WELGGRING

"A"      "B"

Unit:mm

SIZE (B)	SPACER & BLANK				BOLT&NUT				JACK SCREW		JACK BOLT SCREW				WEIGHT(KG)		
	O.D	I.D	T	L1	C	d1	NO	L	H	d2	ℓ	d2	d3	ℓ	Q	SPACER	BLANK
8	305	219	22	165	330.2	M22	12	175	22	M20	95	-	-	-	-	7.9	14.0
10	359	273	25	172	387.3	M27	16	205	27	M20	105	-	-	-	-	11.2	22.5
12	419	324	28	178	450.8	M30	16	225	30	M20	115	-	-	-	-	17.3	37.7
14	483	356	32	178	514.3	M30	20	235	30	M22	120	M22	25	40	52.4	27.1	54.2
16	537	406	38	184	571.2	M33	20	250	33	M22	130	M22	25	40	55.9	34.2	73.9
18	594	457	41	191	628.6	M33	24	260	33	M22	135	M22	25	40	58.9	44.5	101.2
20	651	508	44	191	685.8	M33	24	275	33	M24	145	M24	27	45	61.9	56.7	134.6
24	772	610	51	203	812.6	M39	24	310	39	M24	160	M24	27	45	68.4	89.1	222.2

Notes:  
 (1) 5ø Hole shall only be applied to the spacer.  
 (2) To be die stamp on both side as follows, spacer is "S" and blank is "B"